



TEXAS MASTER NATURALIST ANNUAL MEETING

Virtual Field Sessions Day

TUESDAY OCTOBER 13TH
9AM - 4PM

Included in Registration for
the Annual Meeting!

We've gone virtual for our Annual Meeting's field sessions. Hosted by our Houston regional chapters, join these tours of local project sites, exploring the local ecosystems and highlighting that which makes Houston one of the most diverse regions of our country! Then get set to visit these locations in person when we return to Houston in a few years!



TEXAS MASTER NATURALIST ANNUAL MEETING

Virtual Field Sessions Day

TUESDAY OCTOBER 13TH

9:00am - 10:30am

Gideon Linsecum Chapter

10:30am - 12:00pm

Coastal Prairie Chapter

12:00pm - 1:00pm

LUNCH HOUR

1:00pm - 2:30pm

Cradle of Texas Chapter

2:30pm - 4:00pm

Heartwood Chapter

4:00pm - 5:30pm

Lower Trinity Basin Chapter

THURSDAY OCTOBER 8TH

8:00am - 10:00am

Mercer Botanic Gardens



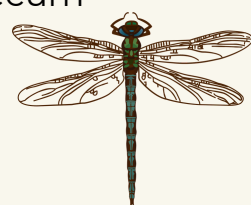


A River Runs Through It - Geology of the Coastal Prairie

GIDEON LINCECUM CHAPTER

A river runs through it, the geology of Texas revealed through the banks of the Brazos River. In this field session, we will visit Stephen F. Austin State Park to learn about the formation of rivers, and how the river meanders with their opposing point bars and cutbanks reveal the geologic features below the surface. Then we will travel to Stone City, Lake Somerville, and Hidalgo Falls to view formations from the Eocene, Oligocene, and Miocene epochs. Along the way, you will see evidence of the seas that once covered this part of Texas and fossils of the marine creatures that inhabited the seas. We hope you will join Dr. Cheryl Metz and TMNs from the Gideon Lincecum Chapter in this geologic journey through time.

TUESDAY OCTOBER 13TH - TIME 9:00AM - 10:30AM



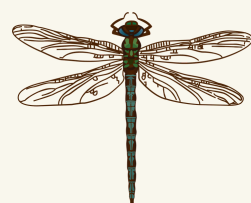


From Fallow to Fabulous: Transforming a City Park into Wetlands, Bird Habitat and Prairie

COASTAL PRAIRIE CHAPTER

In 2009, the Coastal Prairie Chapter had the grand idea of turning parts of a city park from cotton field into a nature and wetlands preserve. Since then, chapter volunteers have striven to convert 164 acres into habitat for native Texas flora and fauna and for prairie restoration using the thousands of plants grown onsite each year and to educate the public about the importance of restoring this native habitat. Come see what has been done so far: Butterfly Garden, Wetlands Area, Prairie Demo Gardens, 20-Acre Prairie Restoration Area, and Woodlands Bird Sanctuary.

TUESDAY OCTOBER 13TH - TIME 10:30AM - 12:00PM





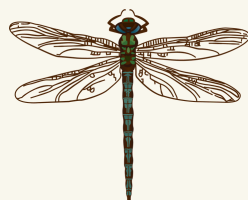
Flo Hannah Prairie and the Follets Strand Prairie

CRADLE OF TEXAS CHAPTER

The Flo Hannah Prairie is one of the few remaining remnants of the great coastal prairies of the Texas Gulf Coast that covered thousands of square miles at the time of Stephen F Austin's colony was established.

Folletts Island is an example of a strand prairie consisting of potholes and marshes where fresh water, salt water and small hummocks 1 to 2 feet high form an intricate inter-fingering of uplands and wetlands. Strand prairies are found just behind the beach dunes and bay edges of the Texas Coast from Beaumont to the Rio Grande. Urbanization and agriculture have destroyed most of these prairies over the years.

TUESDAY OCTOBER 13TH - TIME 1:00PM - 2:30PM





Spring Creek Nature Trail

HEARTWOOD CHAPTER

Located in one of the most densely populated areas in the country, the Spring Creek Greenway is the longest, connected, urban forested corridor in the nation. Serving as a dividing line between Montgomery and Harris Counties, it is estimated that this area has been in use for over 2,000 years! Returning the Greenway to an unfragmented biosystem creates opportunities for flora and fauna to thrive, acts as flood mitigation, and continues to provide a space for hikers, bikers, kayakers, birders, and nature lovers to explore the biodiversity of this area.

TUESDAY OCTOBER 13TH - TIME 2:30PM - 4:00PM



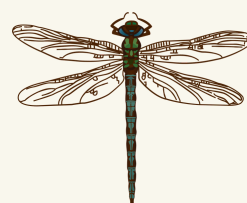


Lower Trinity Basin Chapter - A Commitment to Texas Water

LOWER TRINITY BASIN CHAPTER

Join the Lower Trinity Basin Chapter as they trek through four different Chapter project sites along the watershed of the Trinity River, the largest river in Texas. Working with both local, state and national conservation organizations, the links to water run deep in the Lower Trinity as the whole ecosystem of this unique corner of Texas are tied by the water cycle and life cycles occurring in the River.

TUESDAY OCTOBER 13TH - TIME 4:00PM - 5:30PM





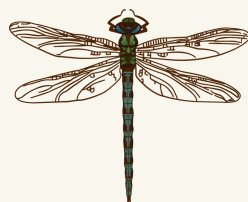
Behind the Scenes Tours from Prairie to Mercer Botanic Gardens

MERCER BOTANIC GARDENS

No need to wear your boots or hat to view naturally-occurring rare plants at the Harris County Precinct 4 Prairie Dawn Preserve, a unique urban pocket prairie! A preserve guide and checklist of ~200 native plant species is available. Then travel virtually to Mercer Botanic Gardens' Mercer Botanical Center for a tour of the labs, seed bank, herbarium, botanical reference library and illustration collections; followed by a tour of the botanic gardens' Endangered and Native Plant Garden. Each stop throughout these educational tours will feature ongoing TMN botanical service projects and training facilities.



THURSDAY OCTOBER 8TH - TIME 8:00AM - 10:00AM





TEXAS MASTER NATURALIST ANNUAL MEETING

Virtual Field Sessions Day

Thank you to each of our Houston Regional Chapters who have volunteered to share the experiences found only in their corner of our state! We look forward to offering these field sessions as recorded videos on our website soon!