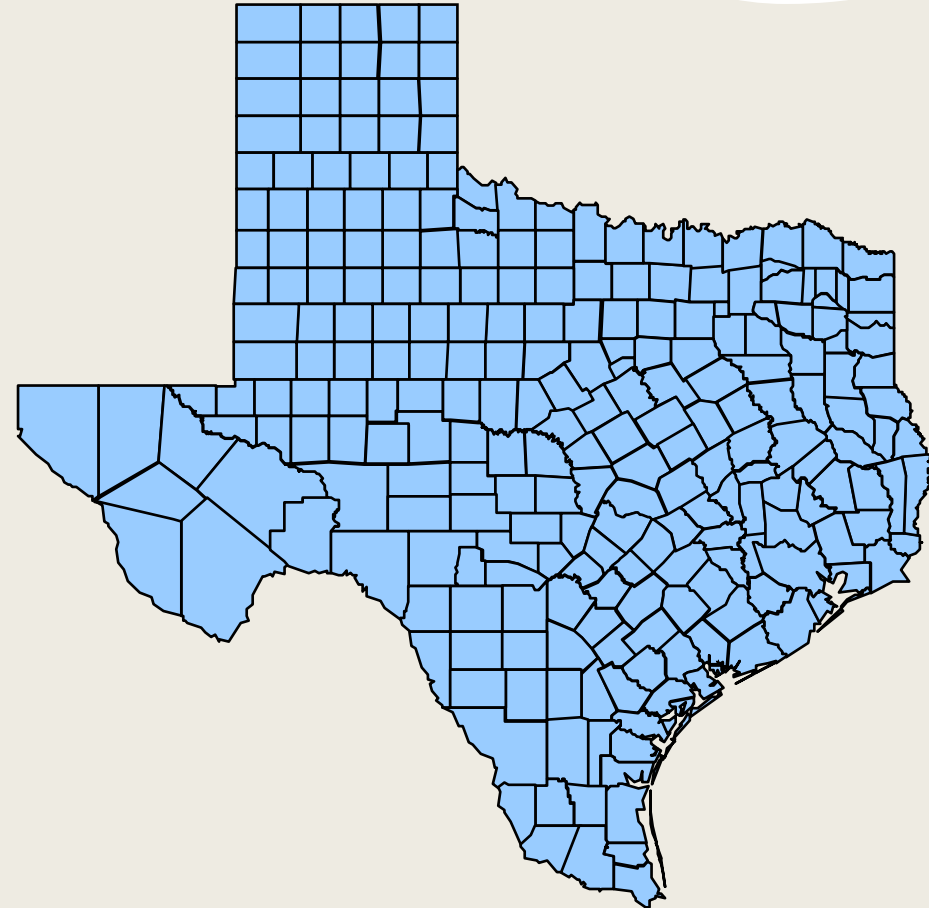
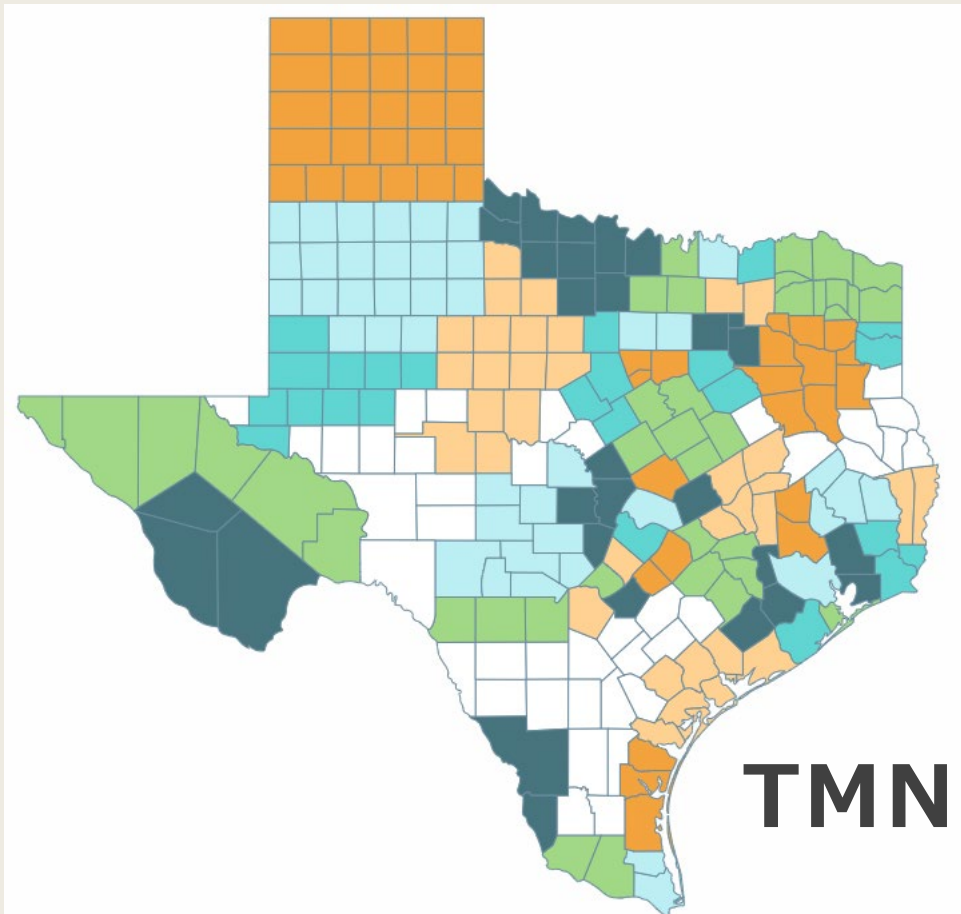


An aerial photograph of a vast agricultural field, likely a seedling nursery, showing rows of young plants in alternating green and reddish-brown colors. A small tractor is visible in the upper right corner. A large, white, rounded rectangular overlay is centered on the image, containing the text.

2026 Certification Pin

Range Map



Both thrive in rural and urban areas



**Both can be
active at
night...**



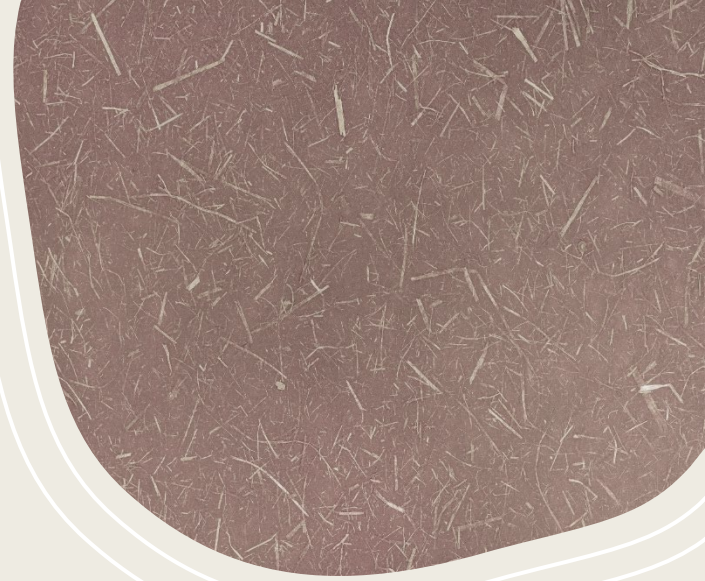
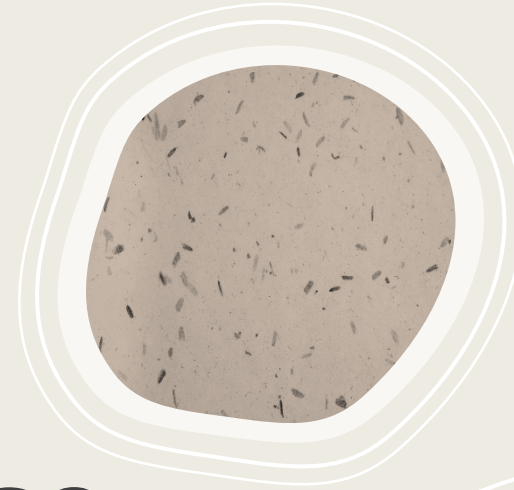
**And during
the day**



A group of people are hiking on a dirt trail through a dense forest. In the foreground, a man wearing a tan hat and a backpack is looking down. To his right, another man in a green shirt and blue jeans is using a tool with red handles. Further back, a woman in a grey shirt and a man in a blue shirt are also visible. The trail is surrounded by trees and green foliage.

**Both like
using trails...**

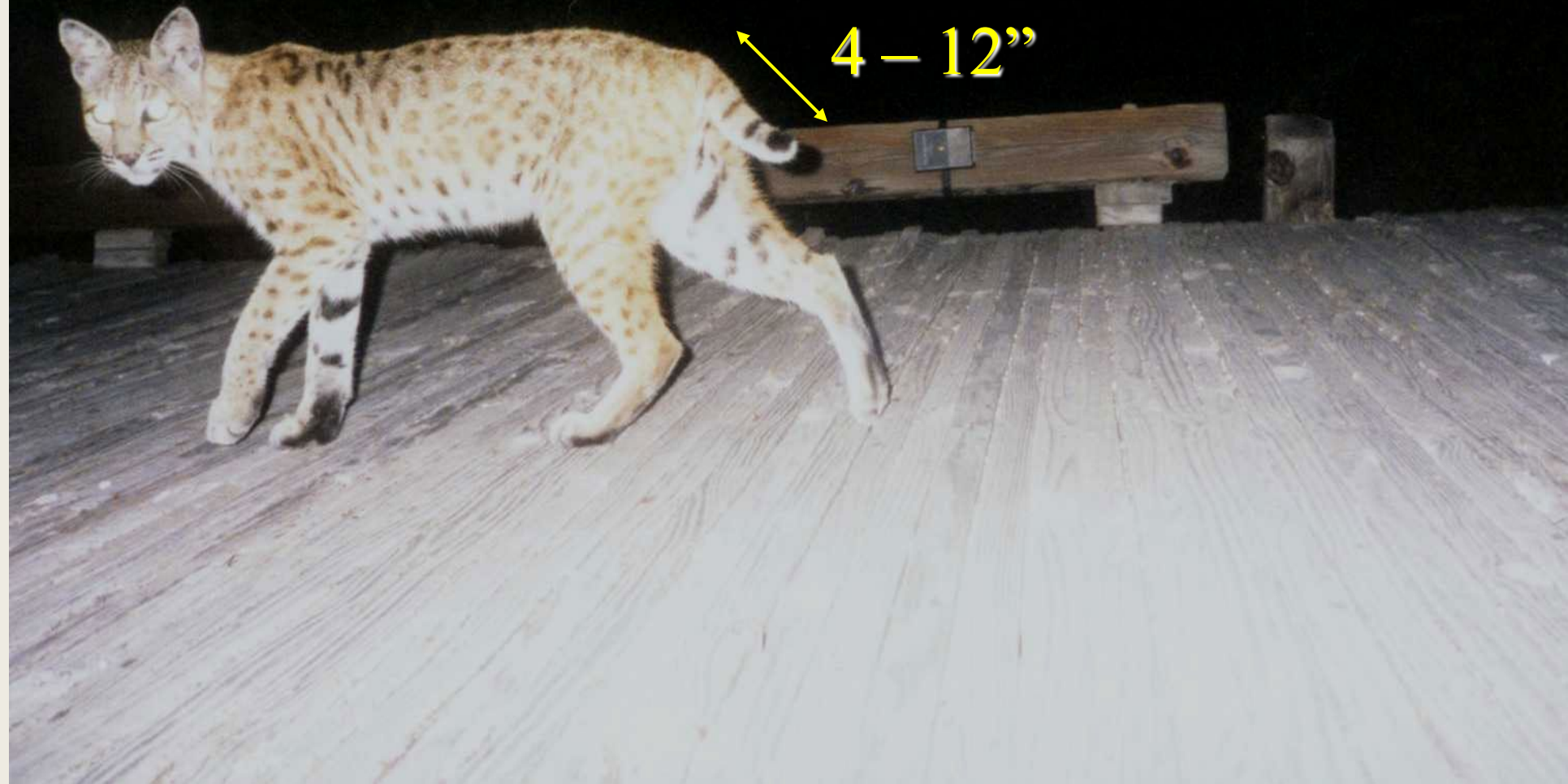
**And both are
adaptive,
resourceful, and use
whatever habitat
and food items are
available**



The bobcat!



Bobcat: 15-25 lbs (max 40)



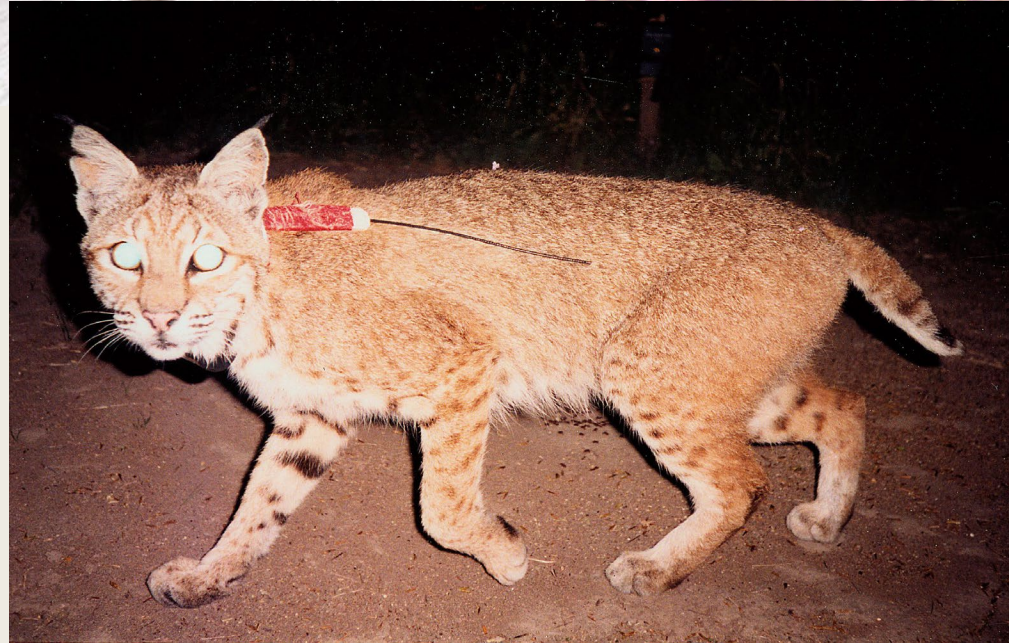
A map of North America, including the United States, Canada, and Mexico. The United States is highlighted in dark blue, indicating the range of Bobcats. The rest of the map, including Canada and Mexico, is in a light tan color. The state boundaries within the United States are outlined in a light blue-grey color.

Bobcat Range

**Females: Avg: 250 acres
(200-500)**

**Males: Avg: 500 acres
(250-750)**

Coat patterns are highly variable



False
eyes for
defense
and
kitten
rearing



Presence of “ruff” varies

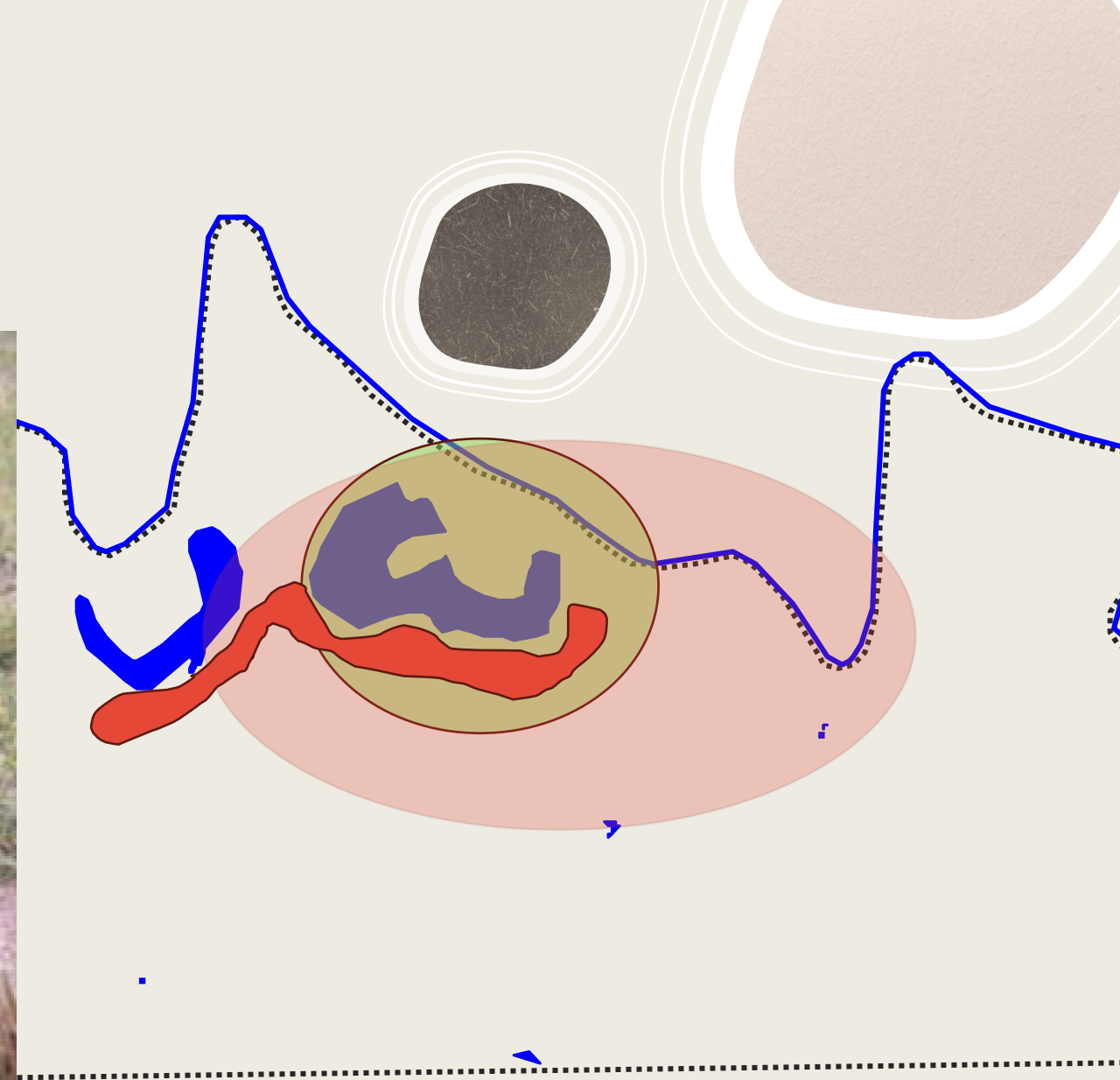


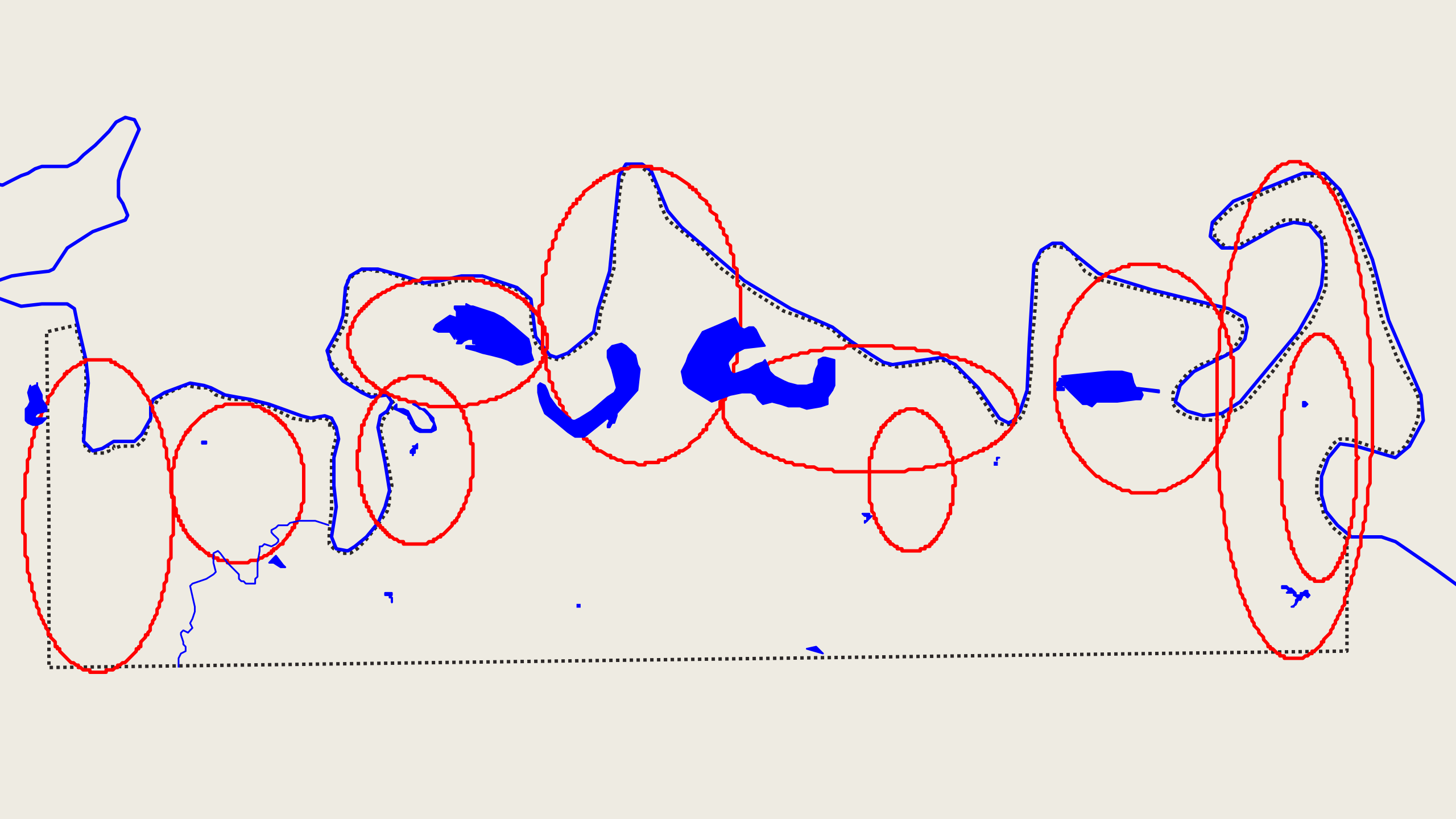
Ear tufts always present

How old do bobcats get?

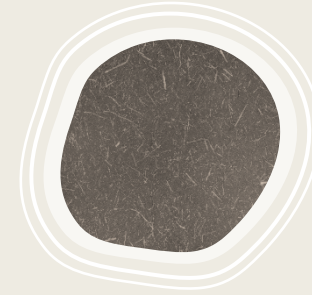
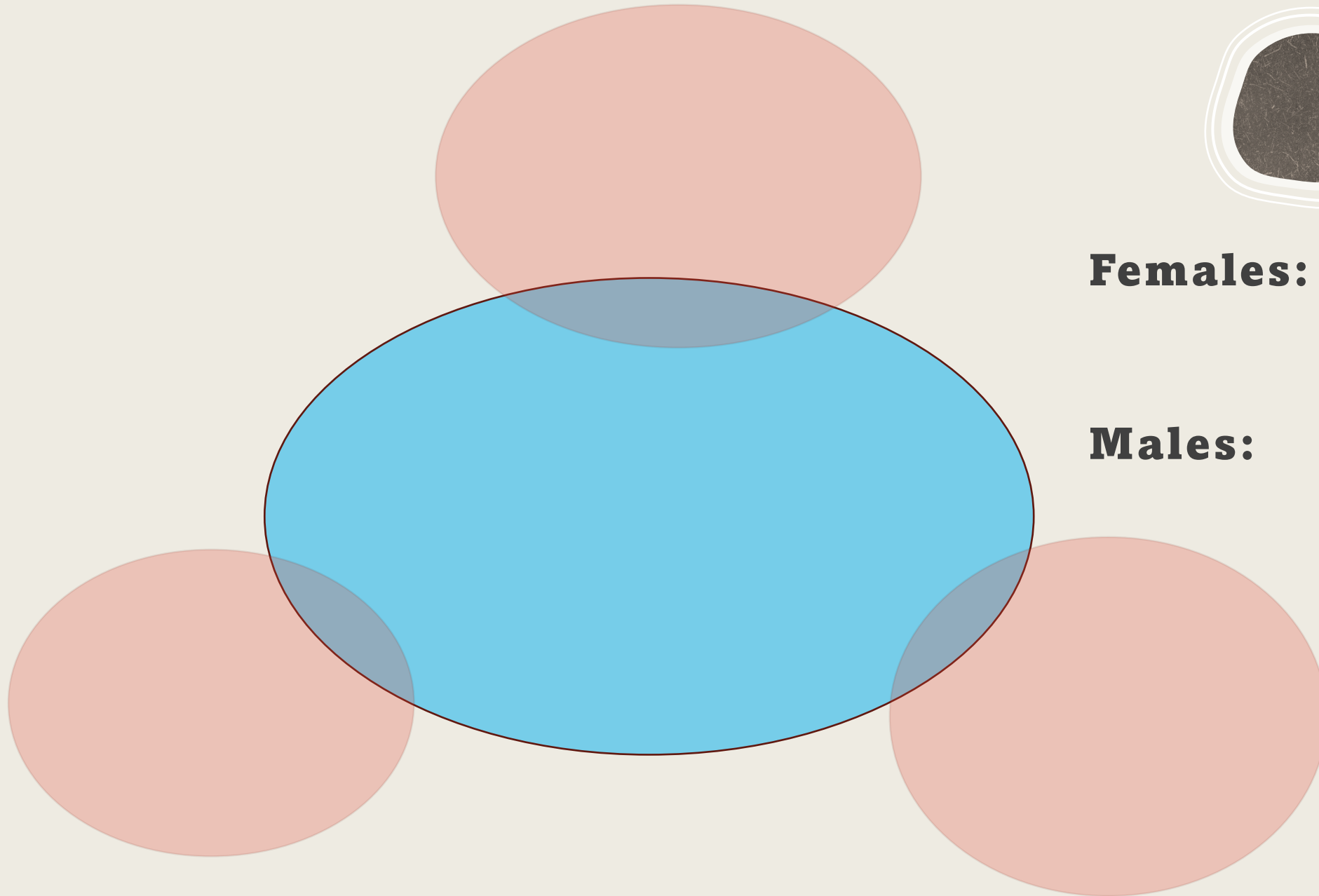


Behavior





Behavior



**Females: Avg: 250 acres
(200-500)**

**Males: Avg: 500 acres
(250-750)**



Mate in February

Born in April

Females usually raise
1-2 kittens up to 6-8
mo.

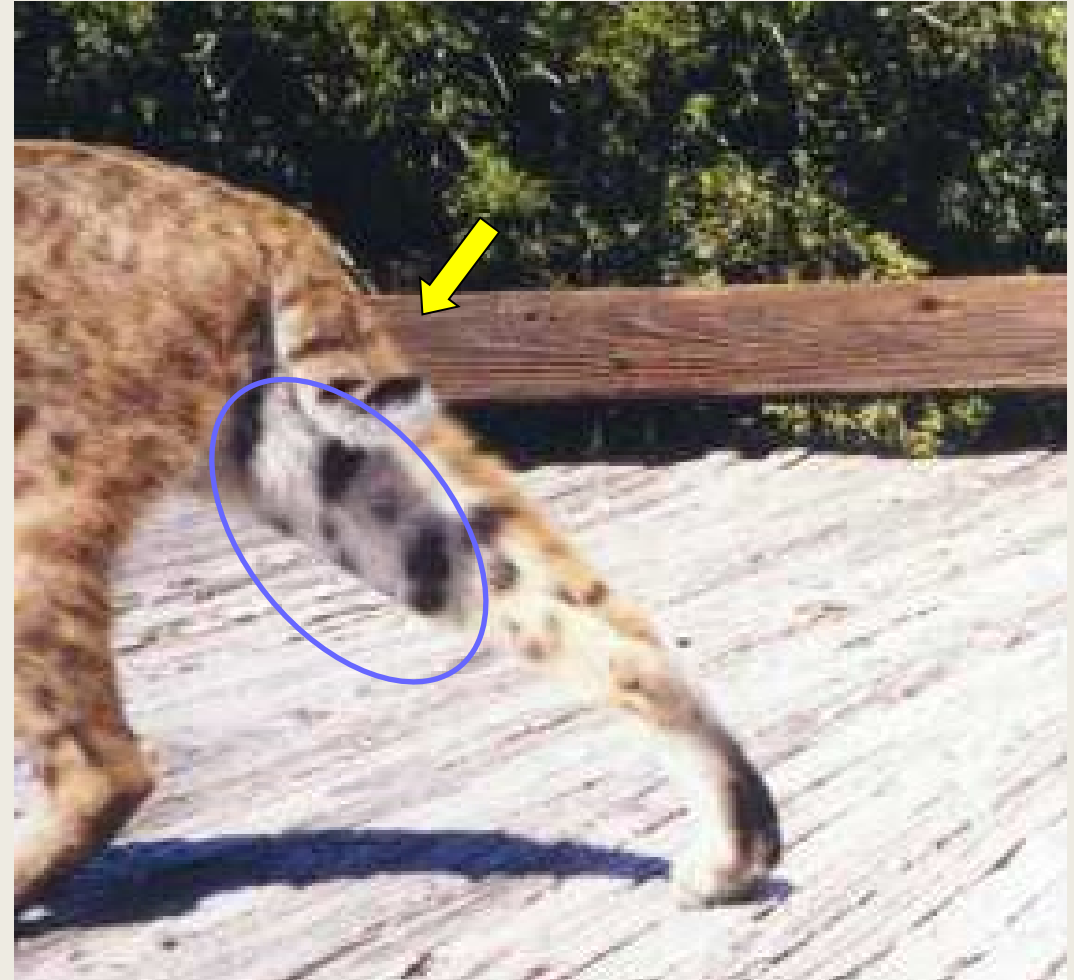
Photo: Iliana Peña



Identifying Bobcats



Identifying Bobcats



Same bobcat-different photos



Identifying Bobcats



Identifying Bobcats



Bobcat Diet

Texas: healthy rodent pop

Rodents

70-85%

Rabbits

50-70%

Birds

10%

Reptiles

3-5%

Mesomammals

1-2%

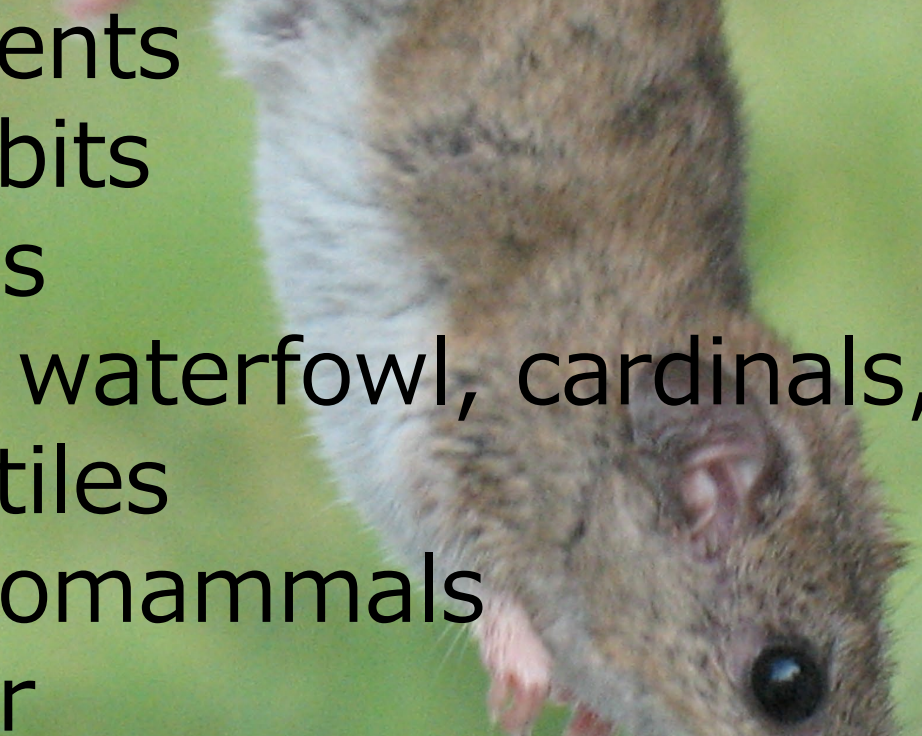
Deer

seasonal



Bobcat Diet

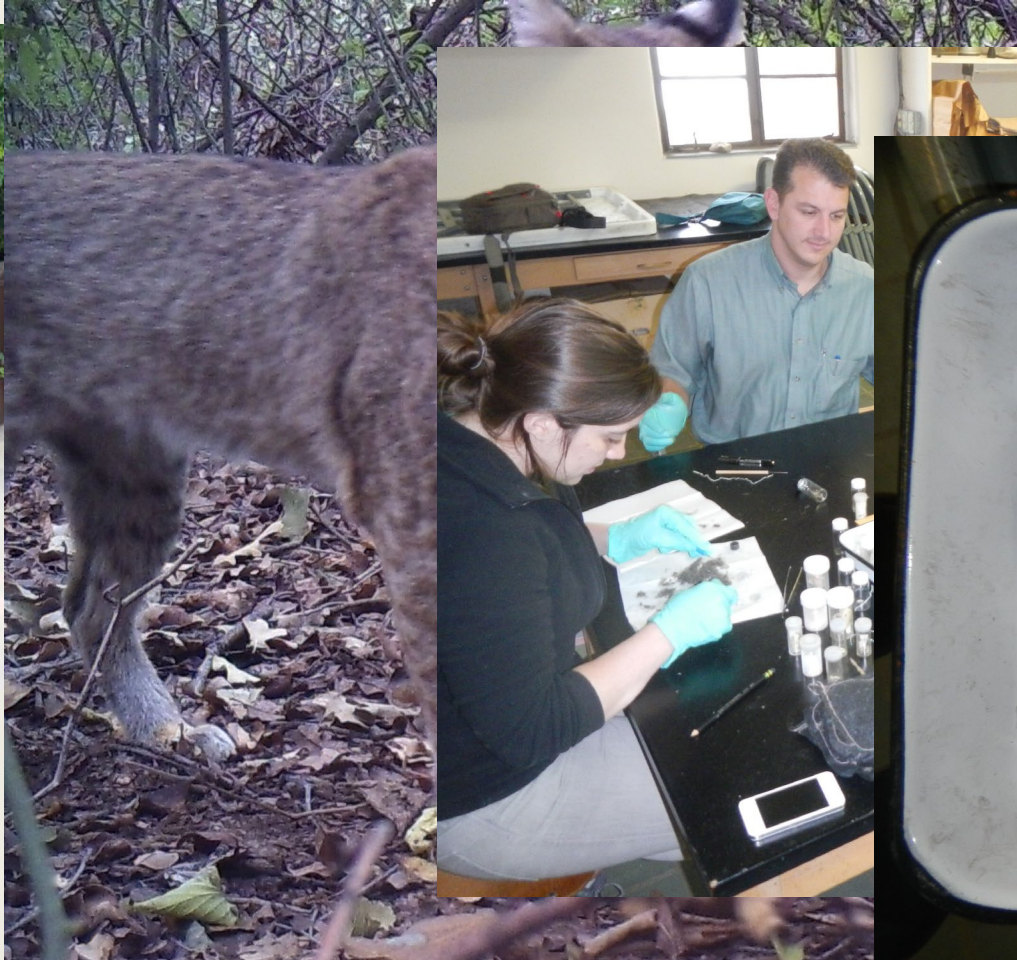
Texas: low rodents



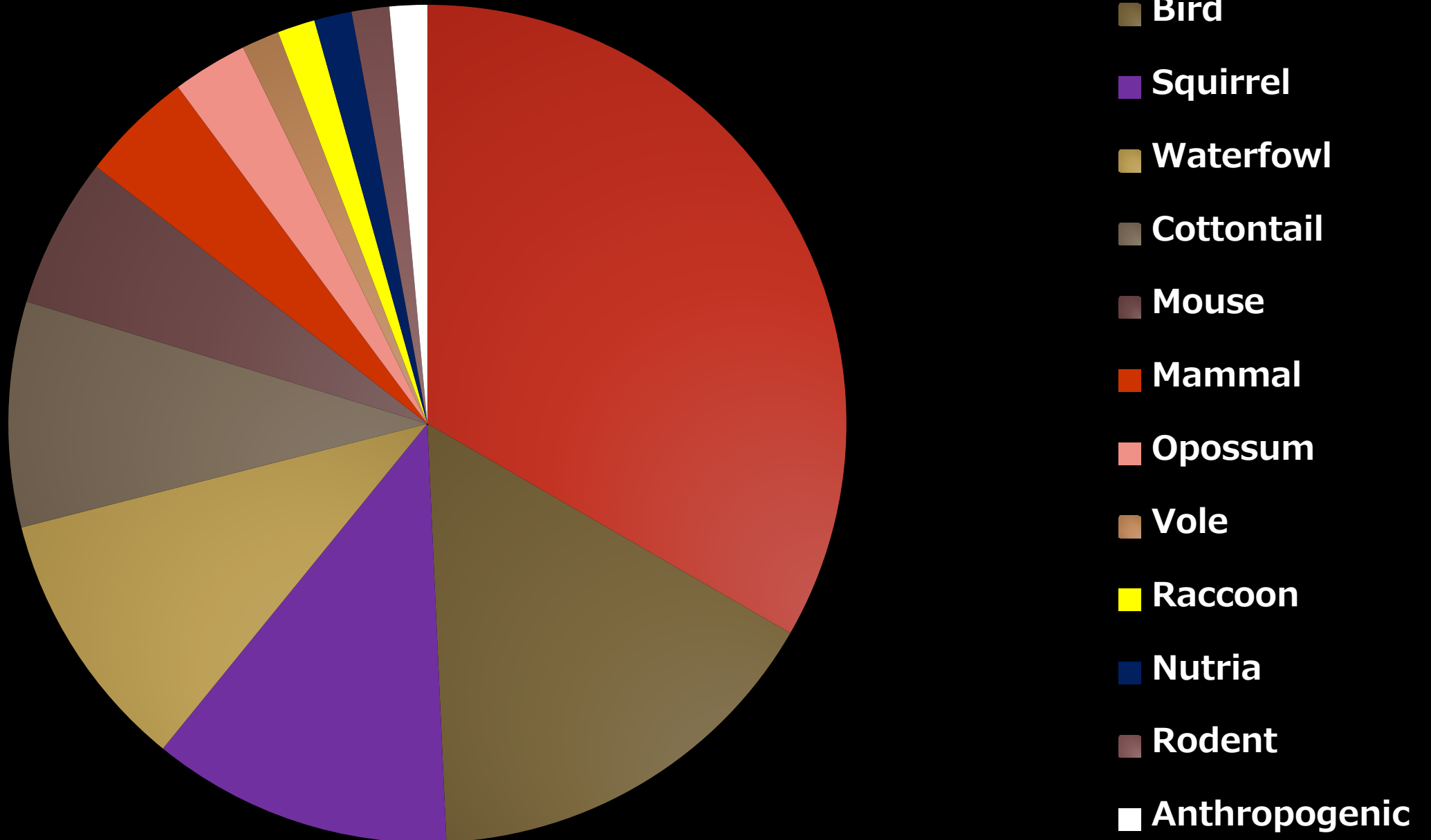
Rodents	20%
Rabbits	20%
Birds	70%
waterfowl, cardinals, sparrows	
Reptiles	5-10%
Mesomammals	1-2%
Deer	seasonal

Quail consumed in only 4% of studies
-found in 2 of 135 stomachs

Urban bobcat diet study



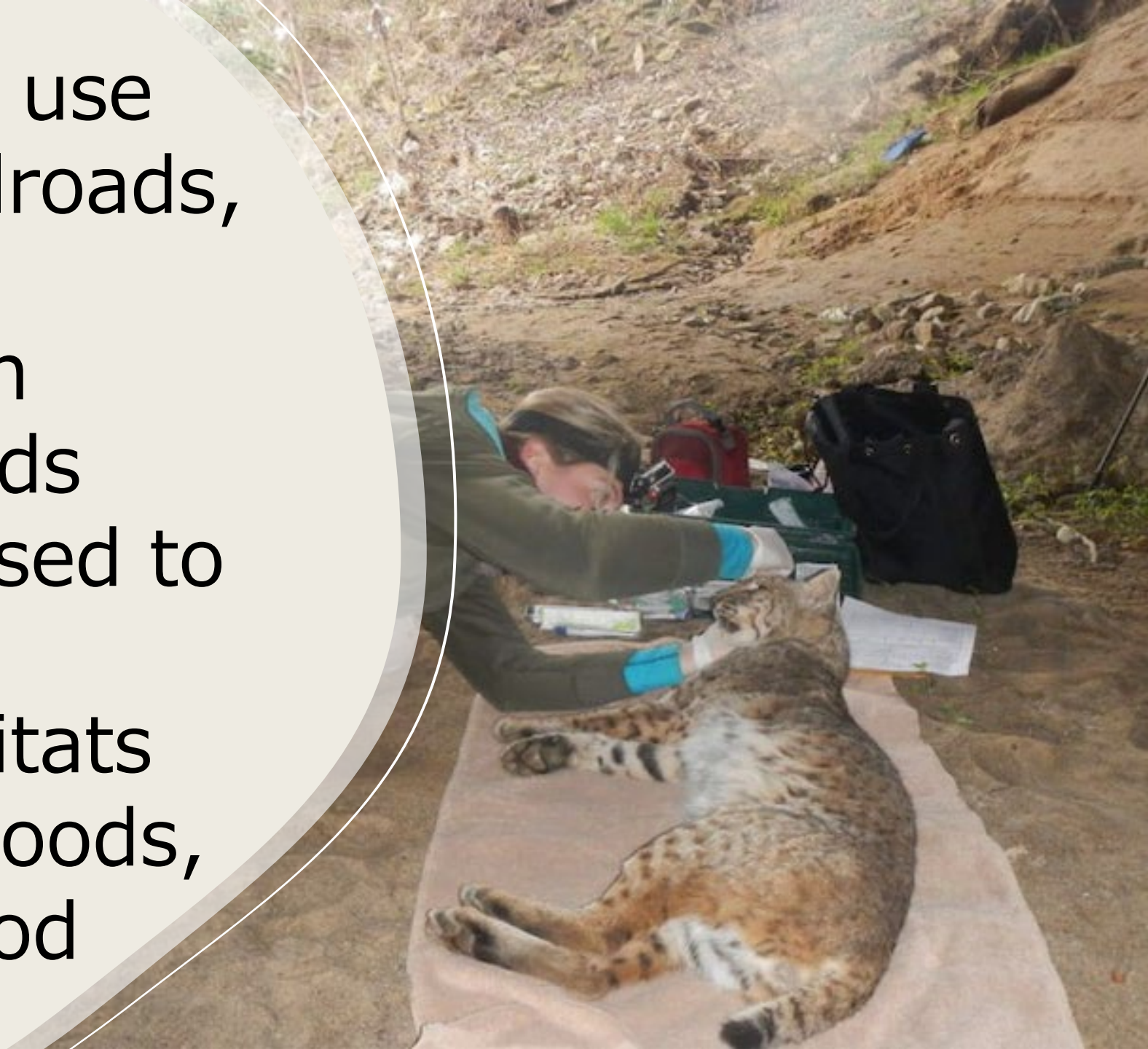
Urban bobcat diet





Urban bobcat study

- Bobcats actively use urban parks, railroads, linear corridors
- Prioritize riparian areas, avoid roads
- Sewer system used to travel between fragmented habitats
- Avoid neighborhoods, pets, and pet food



In 2026,
think like
a bobcat!

